



# Top 10 things to know

Before starting your SharePoint  
project

John Ross  
SharePoint911

# Who is this guy?

- Sr. SharePoint Consultant – SP911
- Trainer for Ted Pattison Group
- Author
  - **MOSS Explained**
  - **Professional SharePoint 2007 Design**
- Blog:
  - <http://www.rossonmoss.com>
- Twitter:
  - <http://twitter.com/johnrossjr>
- Orlando, FL

# What's the point of all this?

- The information on SharePoint can be overwhelming
- You don't need to know everything
- “Where do I start?”

# #1 Don't just wing it!

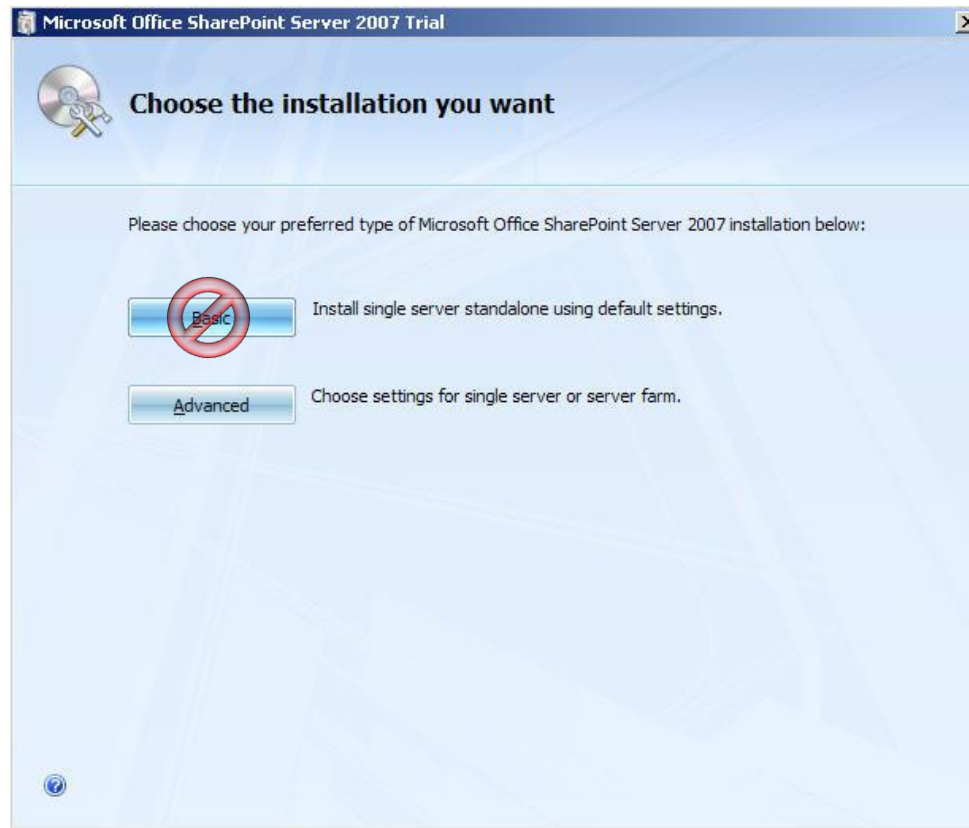
- SharePoint can be tricky
  - Get some good advice
    - From someone who has real experience!
  - Read some good books
  - Training
- Spending more time planning is cheaper than doing it wrong and rebuilding!!!!

## #2 The installation

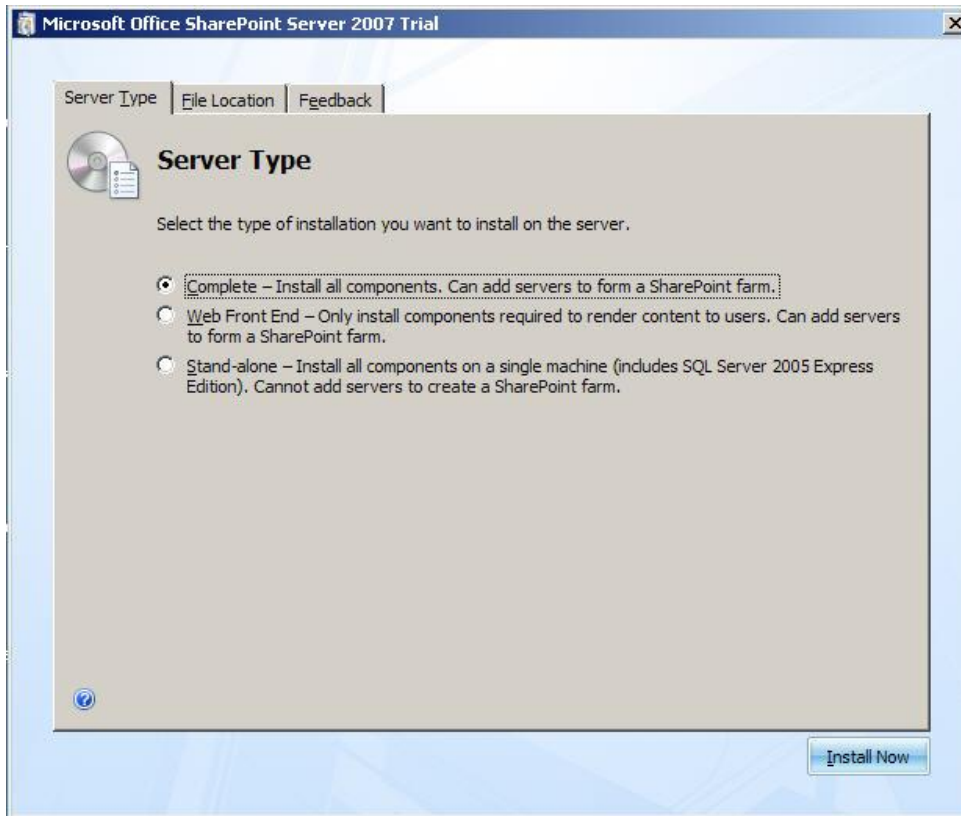
- This is the foundation for your farm
- Choose wisely – could be very painful to fix
- Two options
  - Basic
  - Advanced

Pop quiz hotshot – what do you do?

# Don't choose Basic!



Unless you want to use SQL Express and Local System Account



- Complete – Used 99.9% of the time. Installs all components and gives you complete configuration flexibility.
- Web Front End – Only installs web components of MOSS. Doesn't give you the option of later hosting other roles. No Flexibility = bad.
- Stand-alone – Exact same as previous slide choosing basic. Refer to that slide if you are tempted to use.

## #3 Install Accounts

- First choice – 1 account for everything or account isolation
  - Account isolation has lots of challenges
- Second Choice – NTLM or Kerberos

# Accounts

- Setup User Account \* – Used for running install and to admin server
  - Server Farm Account \* – Central Admin App Pool Account, Timer Service Account
  - SSP App Pool Account
  - SSP Service Account – All SSP services and jobs
  - MOSS Search Account – Used by search service. Also become default content access account for search. You can change from the SSP level
- \* Account needed for WSS

# More accounts

- WSS Search Service Account \* – Used by the help system crawler
- WSS Search Content Account \* – Used to access the data by the help system crawler
- Application Pool Identities \* – The account used to access the content databases for the web app. Also account for w3wp.exe

\* Account needed for WSS

# #4 Disaster Recovery

- SharePoint backups
  - Gets all the SP dbs including the index
  - Can be scheduled using STSADM
  - Permissions can be tricky
- SQL Backups
  - Everyone knows how to do these
  - Doesn't get index
- 3<sup>rd</sup> Party Utilities
  - Powerful but not free

# Backups

- Have a plan that covers the following scenarios:
  - Recover a single file
  - Recover a site or sites
  - Recover a content database
  - Complete server failure

## #5 Learn what's possible OOTB

- SharePoint can do a ton OOTB
- Save time (and money)
- Easier to support

I've lost count of how many times people have re-written OOTB functionality

## #6 Permissions

- Biggest issue most clients have trouble with
- Nearly two dozen permission levels
- Options
  - SharePoint Groups
  - Active Directory
- Management options OOTB
  - Can be challenging

# #7 Consider options for adding functionality

- Customization vs. Development
- Customized vs. Uncustomized Files
- SharePoint Solutions (WSPs) and Features
  
- Considerations
  - Time
  - Money
  - Size of SharePoint environment

# #8 SharePoint Branding

- WSS 3.0 vs. MOSS
  - Options change drastically
- Remember the Wu-Tang Clan's advice on SharePoint branding: C.R.E.A.M.
  - CSS Rules Everything Around MOSS (or WSS)
- Consider time and money available
  - Dolla Dolla bill y'all

# More branding fun...

- Age old question – Master Page or Theme
  - Themes
    - Quick and easy
    - Less options for customization
  - Master Pages
    - Tons of options
    - More challenging
- You might need both!

## #9 Set up a sandbox

- Create a place to test that isn't production
  - Virtual Machines
  - Separate Servers
- Eat your own dog food
  - Run your project with SharePoint
  - Force yourselves to do what you ask your users to do
  - No cheating!

# #10 Governance

- Set of rules and regulations for your SharePoint environment
  - SLAs/OLAs
  - What can you do?
  - What tools are allowed?
- Governance Checklist
  - <http://bit.ly/24LkJW>

You're on 10...where can you go from there?



# #11 Don't forget user training!

- The coolest technical solution is nothing if no one can use it
- Highly usable = happy users
- Happy users = successful project
  
- Many options
  - **Brown bags**
  - **Train power users**
  - **SP Knowledge base**

# For more information

## TechNet White Paper

- Administrator's Guide of Topics to Consider before Deployment
  - <http://bit.ly/wixp4>

# Contact Information

- Blog:
  - <http://www.rossonmoss.com>
- Twitter:
  - <http://twitter.com/johnrossjr>
- Email
  - [john@sharepoint911.com](mailto:john@sharepoint911.com)

<http://www.sharepointorlando.com>